

Wiren Board Database Installation

Instructions for AutoCAD Electrical

Description of the database

The Wiren Board database includes drawings of schematic symbols and 2D views, images of devices for the icon menu, a catalog database, an icon menu file and a table of 2D views.

The icon menu file contains links to drawing files of blocks for schematic symbols and 2D views for the mounting panel, as well as links to icon images for the icon menu.

The catalog database is a database of device models and specifications. The directory is used to create schematic reports.

The Wiren Board database also includes a 2D views table. It specifies which 2D view drawing is used for each device. This is necessary to automatically insert drawings of devices into the panel drawing.

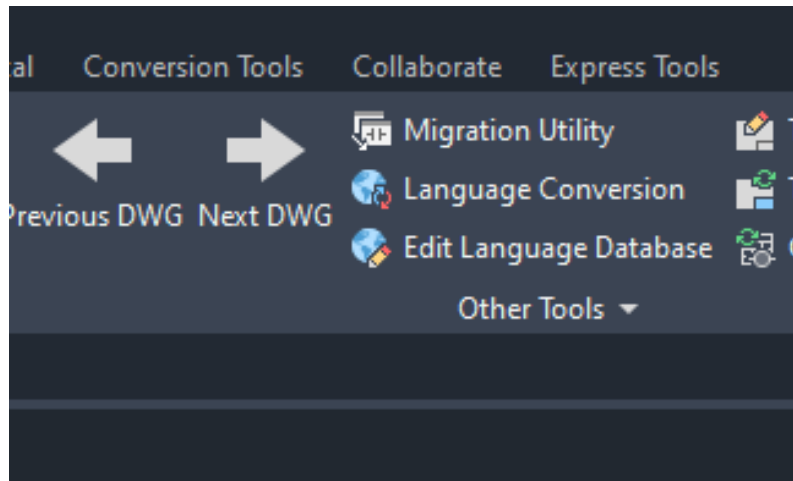
The Wiren Board database for AutoCAD Electrical installation

The manual describes how to install a database for AutoCAD Electrical installed to drive C into the default directory. If you have AutoCAD Electrical installed to a different location, then other file paths will be used to install the base.

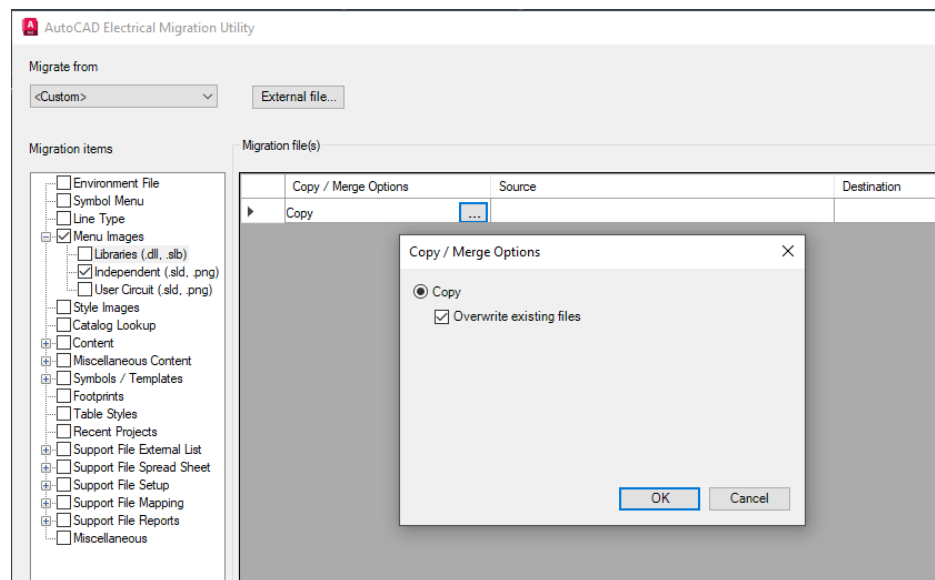
The database can be used along with AutoCAD Electrical 2018 and later.

Installation of the database to AutoCAD Electrical:

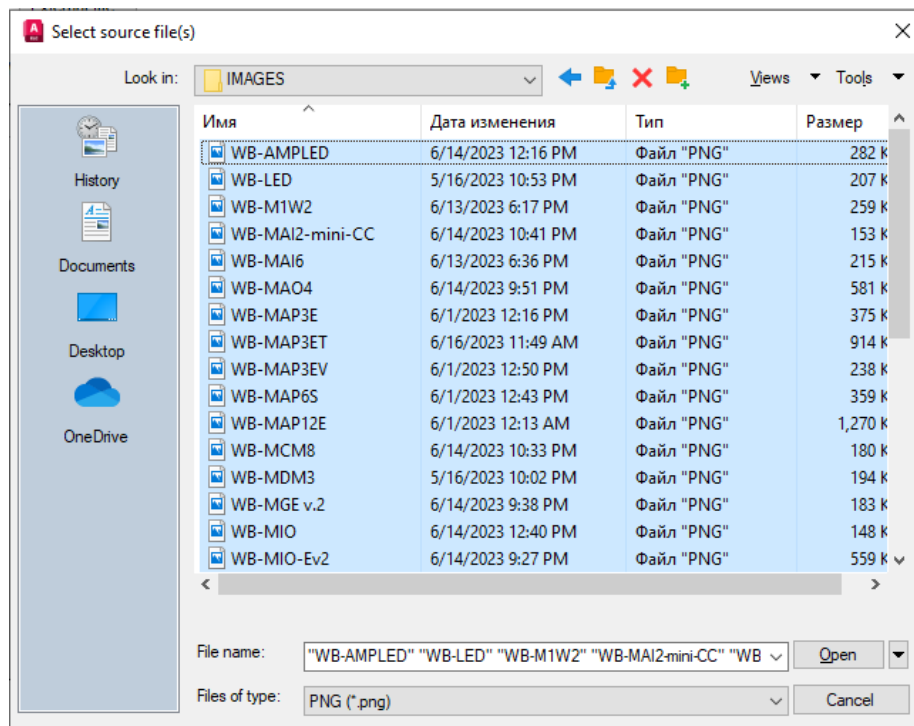
1. Unzip the data archive.
2. Copy the **wirenboard_acade** folder to the AutoCAD Electrical library. By default, the library is located:
C:\Users\Public\Documents\Autodesk\Acade 20xx\Libs\
Users - the User folder.
Public - the "General" folder.
Documents - "Shared Documents" folder.
Acade 20xx is the AutoCAD folder of your program version.
3. Launch AutoCAD Electrical.
4. Open any drawing and go to the Project tab.
5. Launch the Migration Utility.



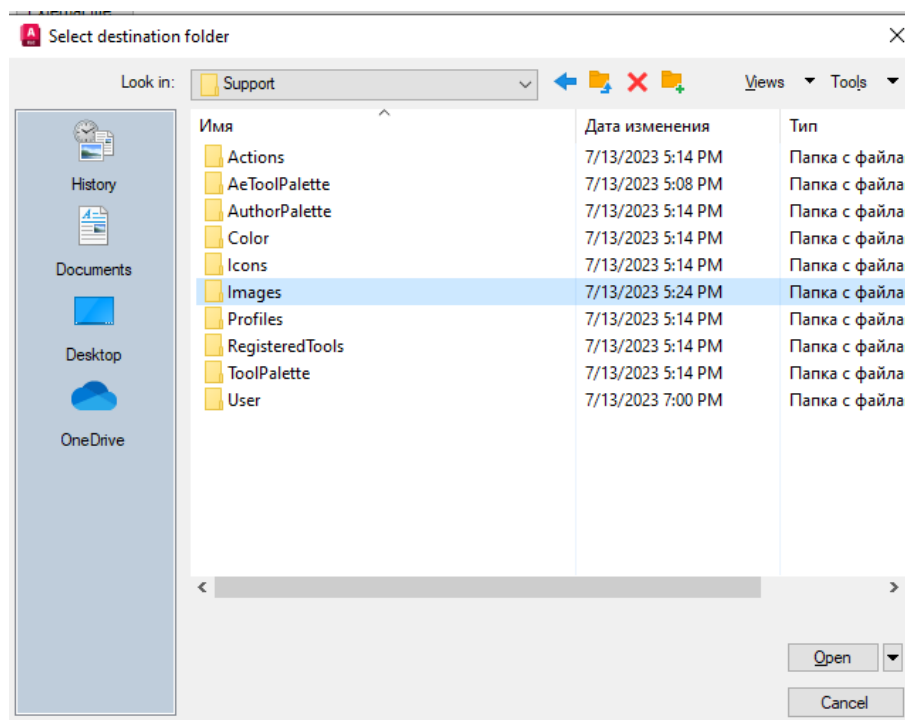
Select the migration item **Menu Images/Independent (.sld.png)**. In the Migration files, select **Copy/Merge Options**.



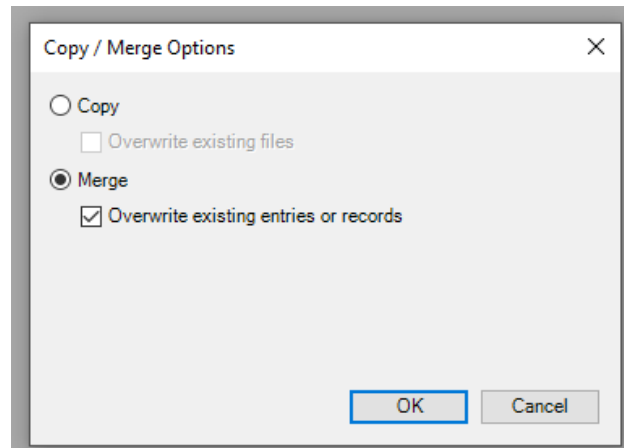
Specify the source. This is the **IMAGES** folder from the unzipped archive. Select the **.png** file type. Select all files in the folder by holding down the Shift key and click **Open**.



Specify the destination folder. This would be the **IMAGES** folder in the suggested directory. If it doesn't exist, create it.



- Next, select the migration item **Symbol Menu**.
Select Copy/Merge options. If you select **Copy**, a separate menu will be created that can be connected to projects.



If you select Merge, the menu will be added to the existing one.

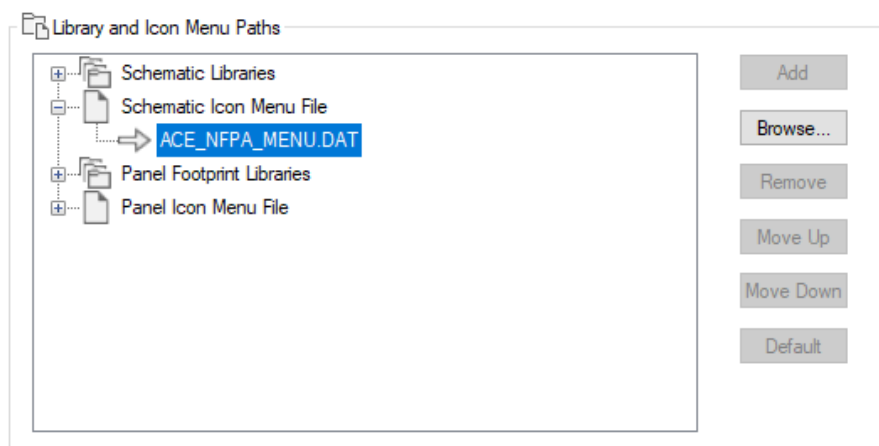
For example, let's choose **Merge**.

Specify the source file. Go to the Icon Menu folder from the downloaded archive. Select the file for your AutoCAD Electrical version.

Next, specify the menu file in the Destination field. For example, let's choose AEC_IEC_MENU.DAT.

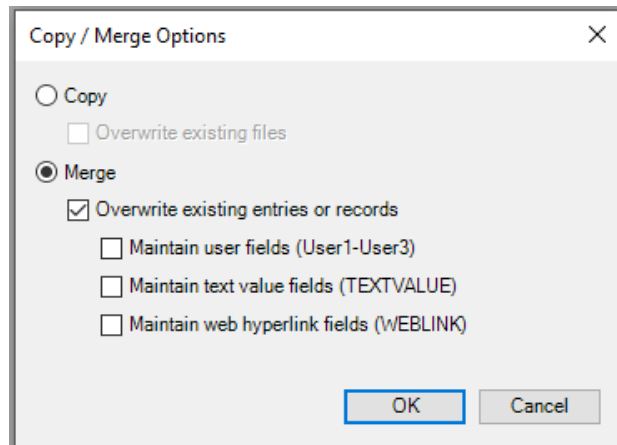
Note:

The choice of the Icon Menu for a project is performed in the project properties.



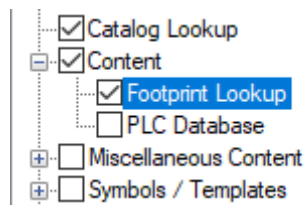
7. Select the next migration item Catalog Lookup. Set Copy/Merge Options. For example, let's choose **Merge** to add data to an existing directory.

To select the source file, go to the Catalogs folder in the downloaded archive and select the **default_cat.mdb** file.



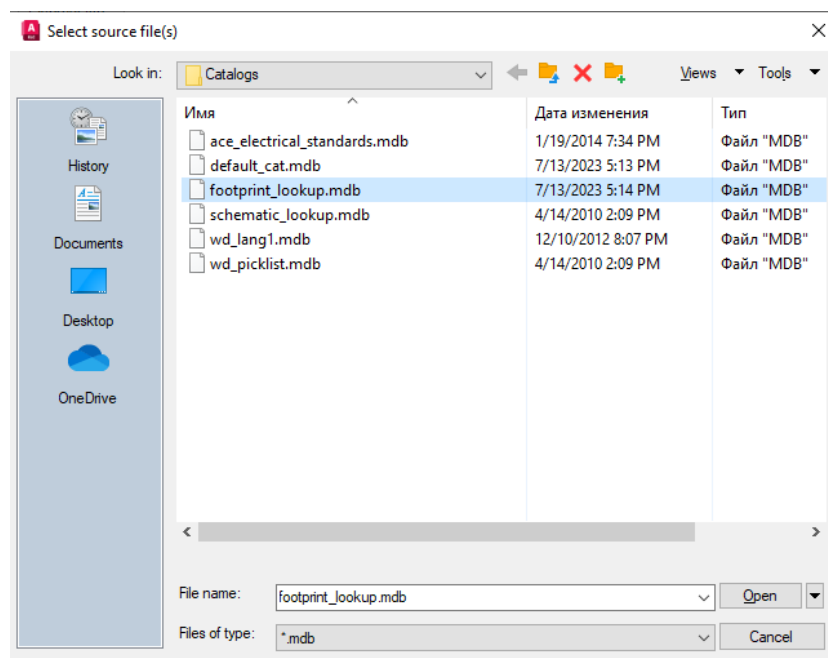
Specify the destination file default_cat.mdb in the suggested default directory, this is the AutoCAD Electrical catalog file.

8. Select the migration item **Content**, and select only **Footprint Lookup**. Specify Copy/Merge Options.



To select the source file, go to the Catalogs folder in the downloaded archive and select the **footprint_lookup** file for your AutoCAD Electrical version.

Specify the footprint_lookup.mdb file in the suggested default directory as the destination.



9. After specifying all the files for migration, click OK.

After the migration is completed, go to the Icon Menu on the Schematic tab. The Wiren Board directory should appear at the end of the list.