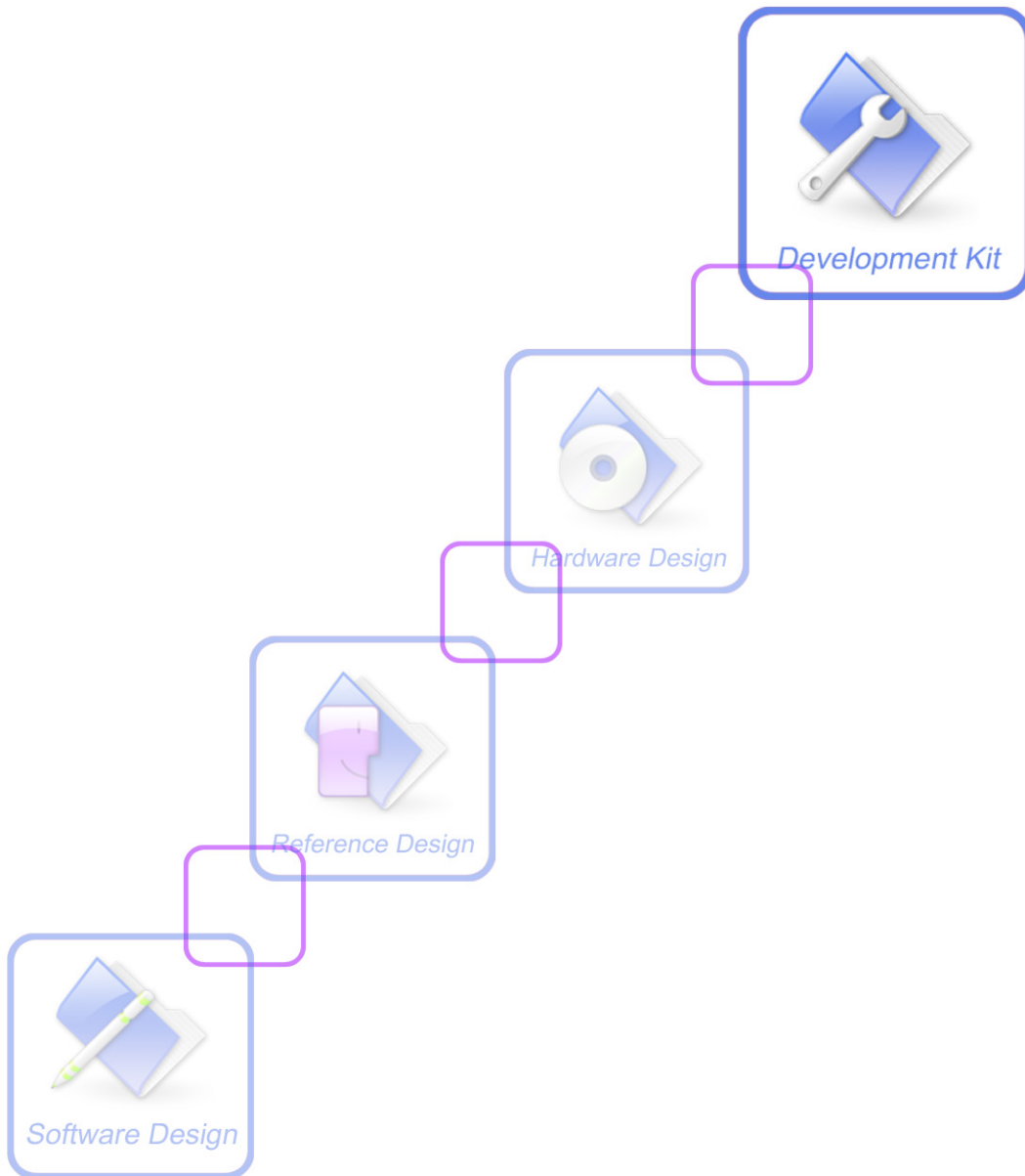




SIM5300E-TE Kit_User Guide_V1.01



Document Title:	SIM5300E-TE Kit_User Guide
Version:	1.01
Date:	2016-11-01
Status:	Release
Document Control ID:	SIM5300E-TE Kit_User Guide_V1.01

General Notes

SIMCom offers this information as a service to its customers, to support application and engineering efforts that use the products designed by SIMCom. The information provided is based upon requirements specifically provided to SIMCom by the customers. SIMCom has not undertaken any independent search for additional relevant information, including any information that may be in the customer's possession. Furthermore, system validation of this product designed by SIMCom within a larger electronic system remains the responsibility of the customer or the customer's system integrator. All specifications supplied herein are subject to change.

Copyright

This document contains proprietary technical information which is the property of SIMCom Limited., copying of this document and giving it to others and the using or communication of the contents thereof, are forbidden without express authority. Offenders are liable to the payment of damages. All rights reserved in the event of grant of a patent or the registration of a utility model or design. All specification supplied herein are subject to change without notice at any time.

Copyright © Shanghai SIMCom Wireless Solutions Ltd. 2016

1 Contents

1	Contents	3
2	Version History	5
3	SIM5300E-TE	6
3.1	USB interface.....	8
3.2	RF connectors	8
3.3	JTAG interface.....	9

Figure Index

FIGURE 1: SIM5300E-TE TOP VIEW.....	6
FIGURE 2: SIM5300E-TE BOTTOM VIEW	7
FIGURE 3: USB INTERFACE	8
FIGURE 4: USB TERMINALS	8
FIGURE 5: RF CONNECTORS	9
FIGURE 6: JTAG INTERFACE.....	9

Table Index

TABLE 1: POINTS LIST OF JTAG INTERFACE	9
--	---

2 Version History

Data	Version	Description of change	Author
2016-07-19	1.00	Origin	Ming.zhu
2016-11-01	1.01	Update PCB	Ming.zhu

SCOPE

SIM5300E-TE is equipped with SIMCOM-EVB. The main function of TE board is connection between module and SIMCOM-EVB. This document describes helpful information to use SIM5300E-TE.

This document is subject to change without notice at any time.

3 SIM5300E-TE

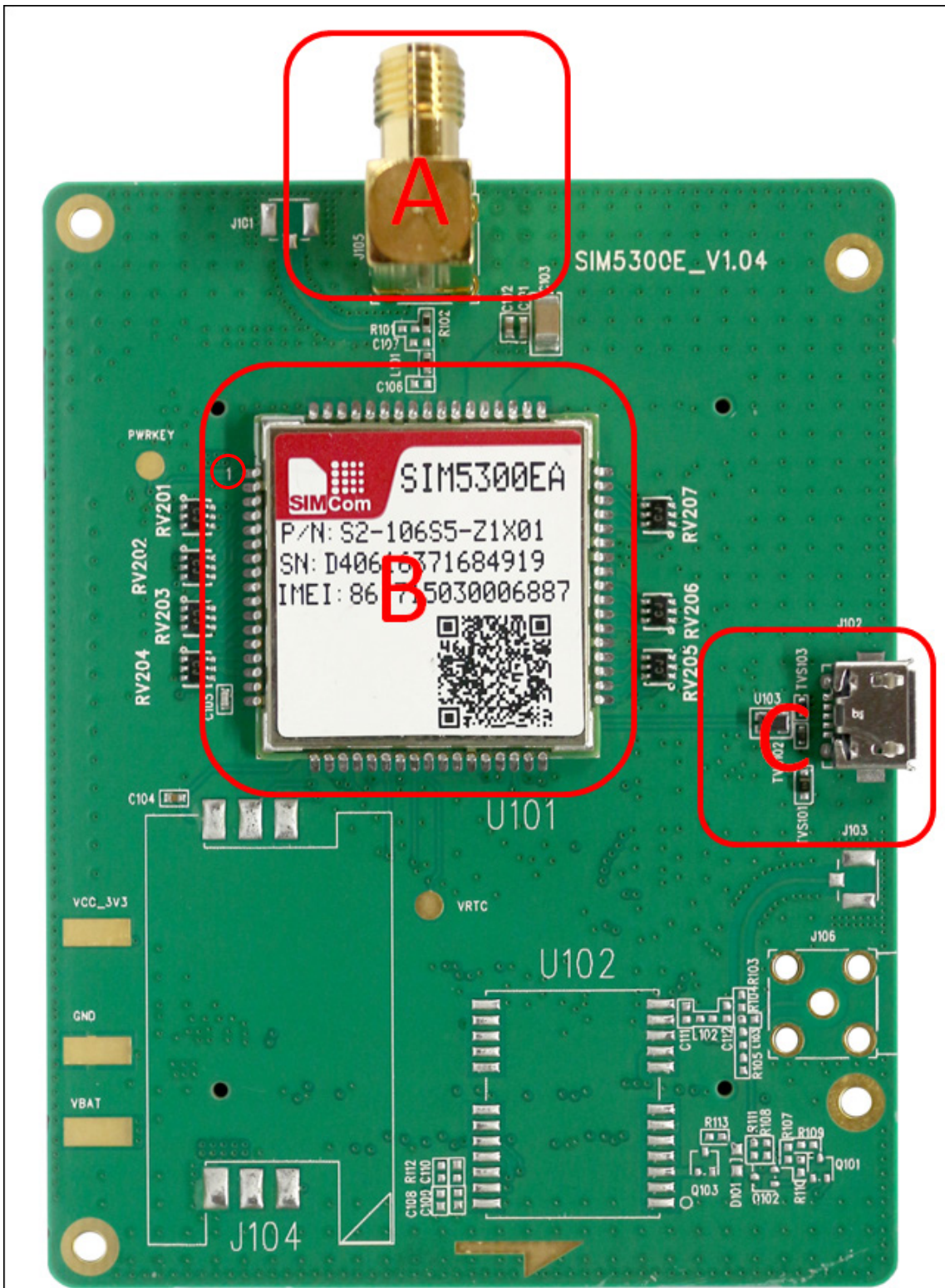


Figure 1: SIM5300E-TE TOP view

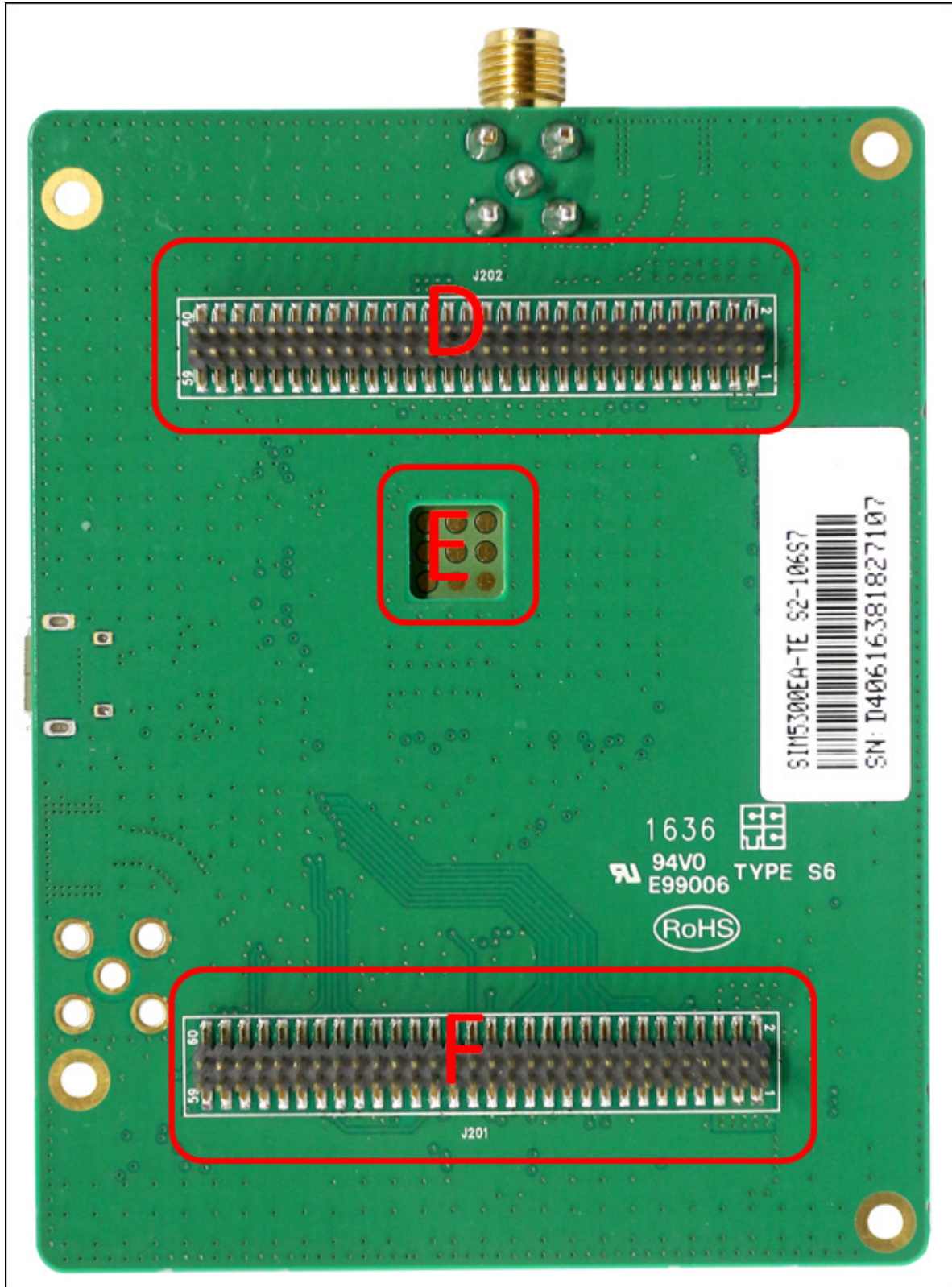


Figure 2: SIM5300E-TE BOTTOM view

- A: RF connectors for 3G antenna
 - B: SIM5300EA
 - C: USB connector
 - D: Connector for SIMCOM-EVB
- SIM5300E-TE Kit_User Guide_V1.01

E: JTAG interface

F: Connector for SIMCOM-EVB

3.1 USB interface

SIM5300E-TE provide a USB interface, which is used for AT port or update software. This interface is compliant with the USB2.0 specification.

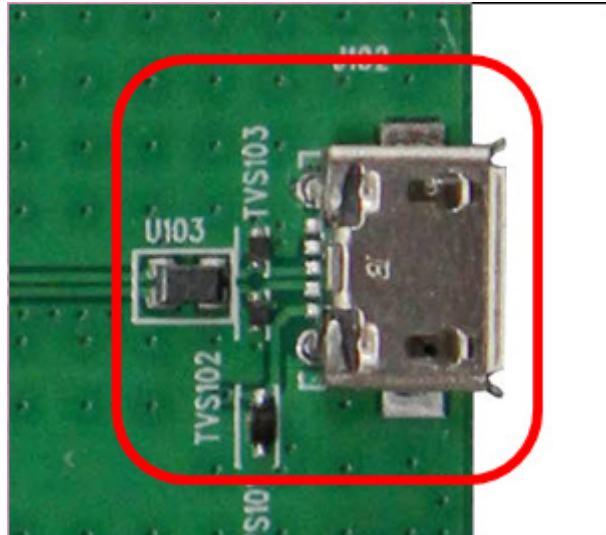


Figure 3: USB interface

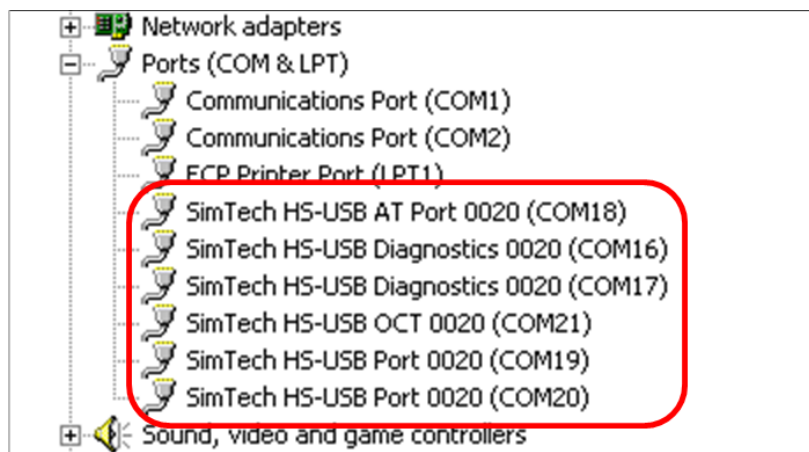


Figure 4: USB terminals

3.2 RF connectors

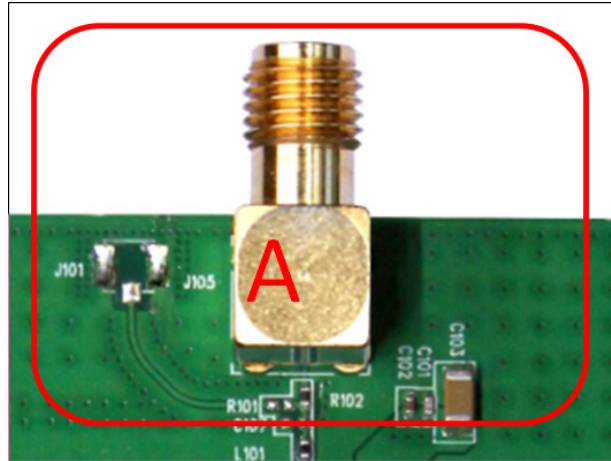


Figure 5: RF connectors

As the R102 presented, the default RF connector is J105.

3.3 JTAG interface

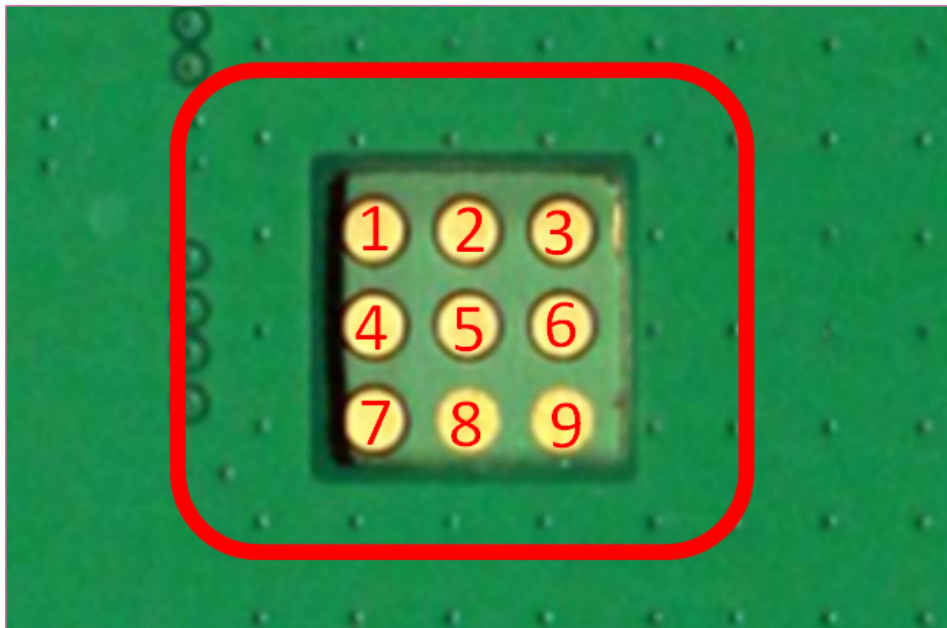


Figure 6: JTAG interface

Table 1: Points list of JTAG interface

Pin	Signal
1	NTRST
2	TMS
3	TDO

4	NRTCK
5	TDI
6	TCK
7	NRTCK1
8	GND
9	GND



Contact us

Shanghai SIMCom Wireless Solutions Ltd.

Address: Building A, SIM Technology Building, No.633, Jinzhong Road, Changning District, Shanghai 200335

Tel: 86-21-32523300

Fax: 86-21-32523020

Email: simcom@sim.com

Website: www.simcomm2m.com